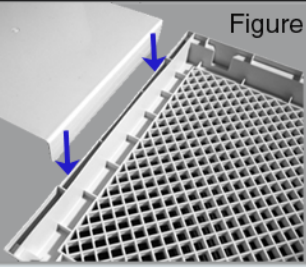


ASSEMBLY INSTRUCTIONS

5 SIMPLE STEPS - NO TOOLS REQUIRED

Figure A



1. Turn the LATTICE upside down. Insert the PLATE into the slot in the lattice as shown in Figure A. Turn the lattice back over, making sure the plate stays in place.

2. Snap both FENCES onto the lattice. Please make sure to push down all the way.

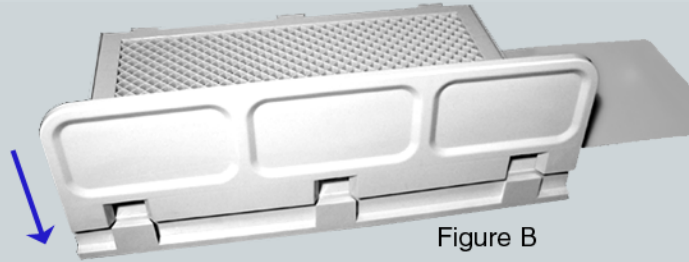
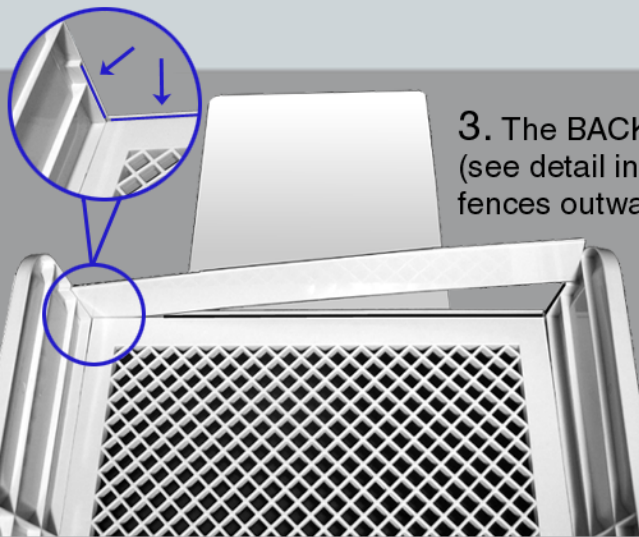


Figure B

3. The BACK WALL goes into the slots on the lattice and fences (see detail in Figure C). You must carefully bend one of the fences outward to fit the back wall in as shown.



Slightly bend this fence outward

Figure C

4. Slide the TRAY under the lattice as shown in Figure D.

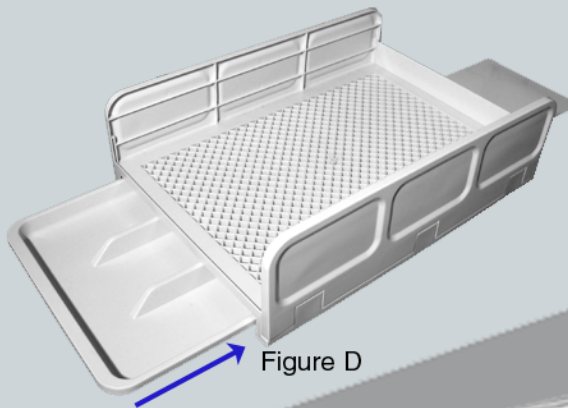


Figure D



5. Place your covered litterbox on top of the plate. The Paw Path is ready for use!

